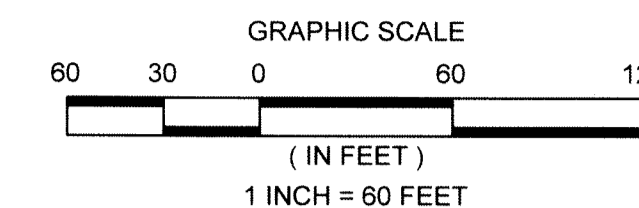
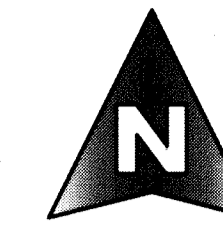


ALTON TOWN CENTER

BEING A RE-PLAT OF TRACT "C-3", ALTON PCD, AS RECORDED IN PLAT BOOK 118, PAGES 197 THROUGH 206, INCLUSIVE, PUBLIC RECORDS OF PALM BEACH COUNTY, FLORIDA, LYING IN THE NORTHEAST QUARTER OF SECTIONS 26, TOWNSHIP 41 SOUTH, RANGE 42 EAST,

CITY OF PALM BEACH GARDENS, PALM BEACH COUNTY, FLORIDA.

JANUARY, 2018 SHEET 4 OF 4

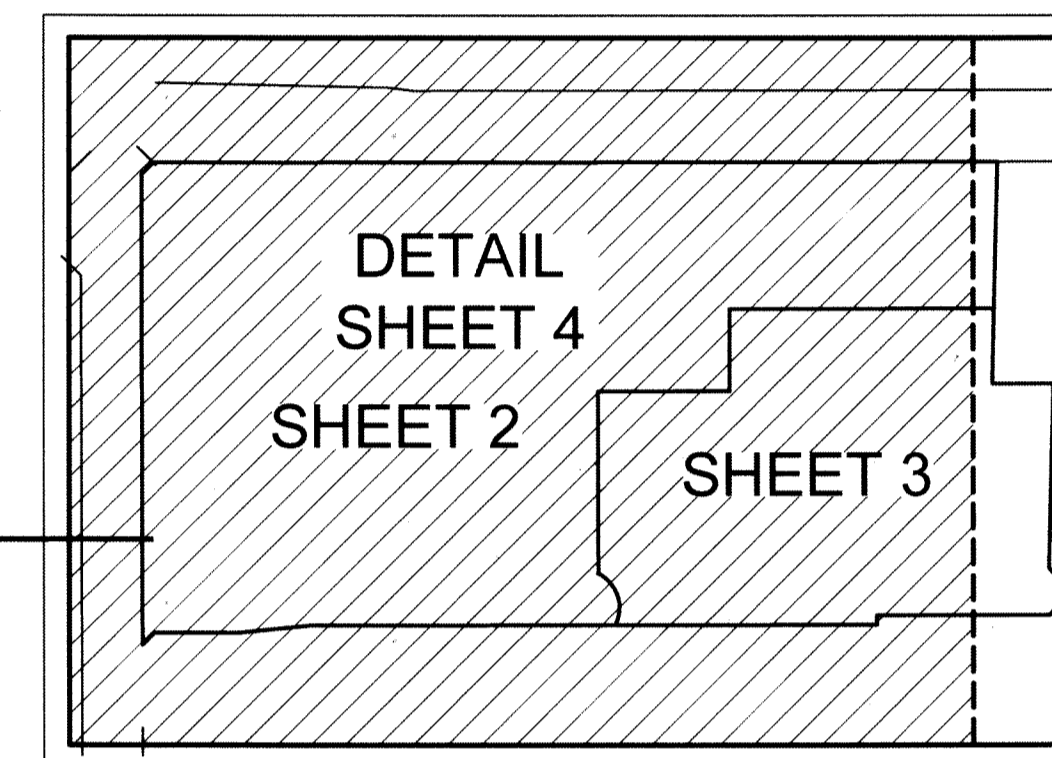
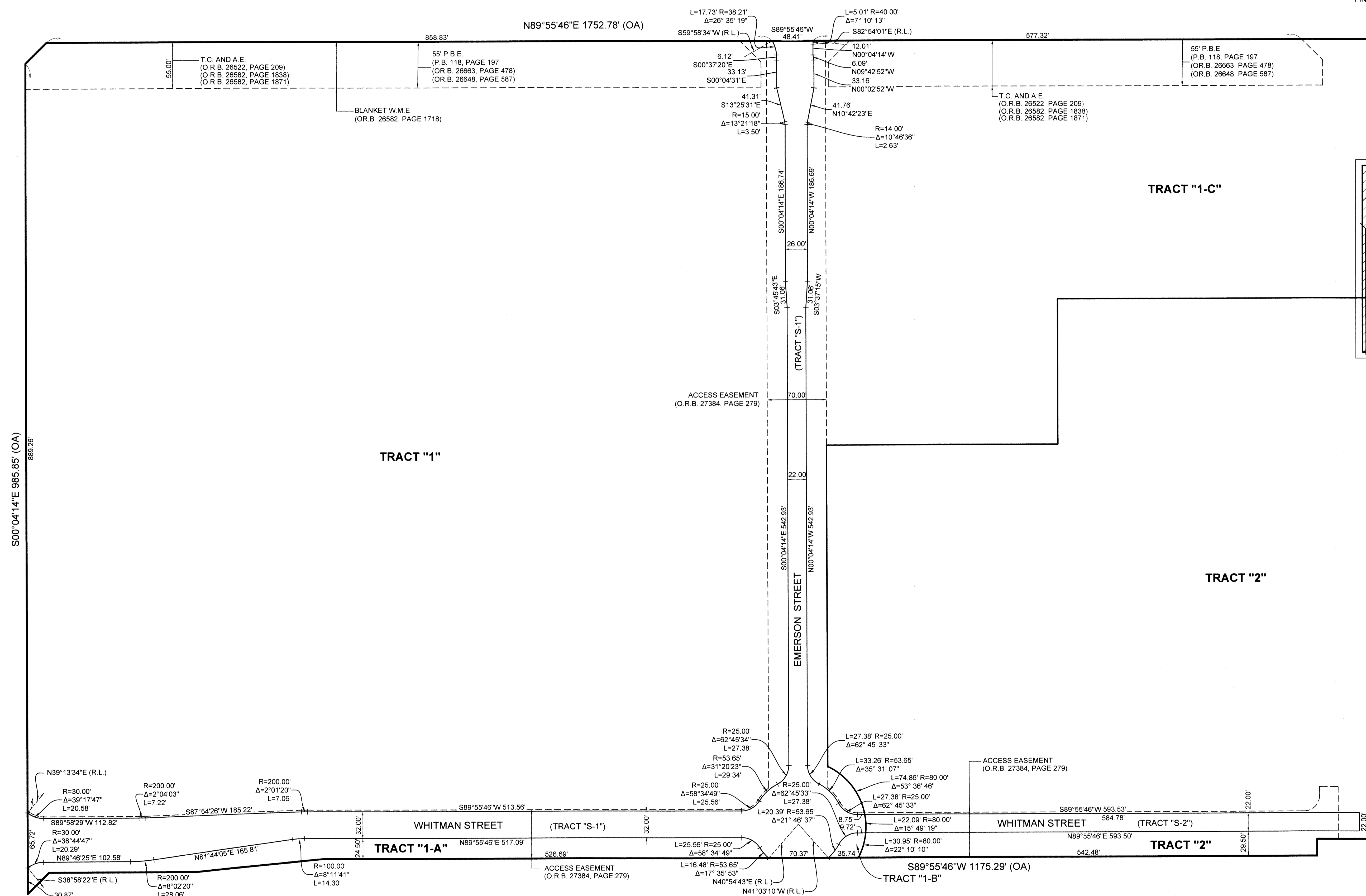


166

COUNTY OF PALM BEACH)
STATE OF FLORIDA) SS

THIS PLAT WAS FILED FOR RECORD AT _____ M. THIS _____ DAY OF _____ 2018, AND DULY RECORDED IN PLAT BOOK NO. _____ ON PAGE _____ THRU _____

SHARON R. BOCK,
CLERK AND COMPTROLLER
BY: _____ D.C.



KEY MAP
NOT TO SCALE

LEGEND

- P.O.B. = POINT OF BEGINNING
- P.O.C. = POINT OF COMMENCEMENT
- P.R.M. = PERMANENT REFERENCE MONUMENT
- O.R.B. = OFFICIAL RECORD BOOK
- D.B. = DEED BOOK
- P.B. = PLAT BOOK
- PBC = PALM BEACH COUNTY
- TYP. = TYPICAL
- FND. = FOUND
- RW. = RIGHT OF WAY
- U.E. = UTILITY EASEMENT
- R. = RADIUS
- L. = ARC LENGTH
- Δ. = CURVE CENTRAL ANGLE
- C.B. = CHORD BEARING
- C.L. = CHORD LENGTH
- R.L. = RADIAL LINE
- P.B.E. = PARKWAY BUFFER EASEMENT
- R.B.E. = ROADWAY BUFFER EASEMENT
- S.U.A.E. = SEACOAST UTILITY AUTHORITY EASEMENT
- P.P.A.E. = PERPETUAL PUBLIC ACCESS EASEMENT
- D.E. = DRAINAGE EASEMENT
- I.R. = IRON ROD
- L.A.E. = LIMITED ACCESS EASEMENT
- A.E. = ACCESS EASEMENT
- T.C. = TEMPORARY CONSTRUCTION
- FPL = FLORIDA POWER AND LIGHT COMPANY
- W.M.E. = WATER MANAGEMENT EASEMENT
- F.D.O.T. = FLORIDA DEPARTMENT OF TRANSPORTATION
- SUA = SEACOAST UTILITY AUTHORITY
- NPBCID = NORTHERN PALM BEACH COUNTY IMPROVEMENT DISTRICT
- PCD = PLANNED COMMUNITY DEVELOPMENT
- ⊕ = CENTERLINE
- = SET 4"X4"X24" CONCRETE MONUMENT WITH ALUMINUM DISK, STAMPED "PRM LB 2438"
- = SET MAG NAIL WITH BRASS DISK, STAMPED "PRM LB 2438"

S00°04'14"E 985.85' (OA)

889.26'

65.72'

24.60'

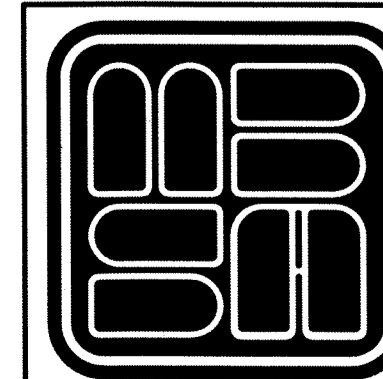
30.87'

32.00'

29.50'

22.00'

N00°00'00"E



MICHAEL B. SCHORAH & ASSOCIATES, INC.
1890 FOREST HILL BLVD., SUITE 206
WEST PALM BEACH, FLORIDA 33406
EB# 2438 TEL. (561) 968-0080 FAX. (561) 642-9726 LB# 2438

**ALTON TOWN CENTER
DETAIL SHEET
TRACT "S-1" AND "S-2"**